

# India's Leading And **Most Preferred** **Solar Module OEM & ODM** **Company**

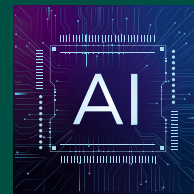
*A Premium Quality*  
**Solar Module Manufacturer**



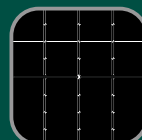
*Quality*  
**Damdar**  
*Performance*  
**Shaandar**

## **3GW AI DRIVEN FULLY AUTOMATIC ROBOTIC MANUFACTURING PLANT**

Cosmic PV Power Private Limited is one of India's fastest-growing PV module manufacturers, certified by BIS and enlisted under ALMM. Operating state-of-the-art, fully robotic, AI-powered TopCON solar module manufacturing plants in Surat, Gujarat-INDIA, with an annual production capacity of 3GW, we are redefining excellence in solar production. With advanced automatic robotic facilities, we produce high-efficiency Multi-BB PV modules ranging from 500W to 650W, offering both standard and customized solutions. As a trusted OEM partner for leading solar companies, Cosmic PV Power is recognized as the most preferred solar OEM manufacturer, committed to driving India's renewable energy revolution.



Annual Capacity  
**3GW**



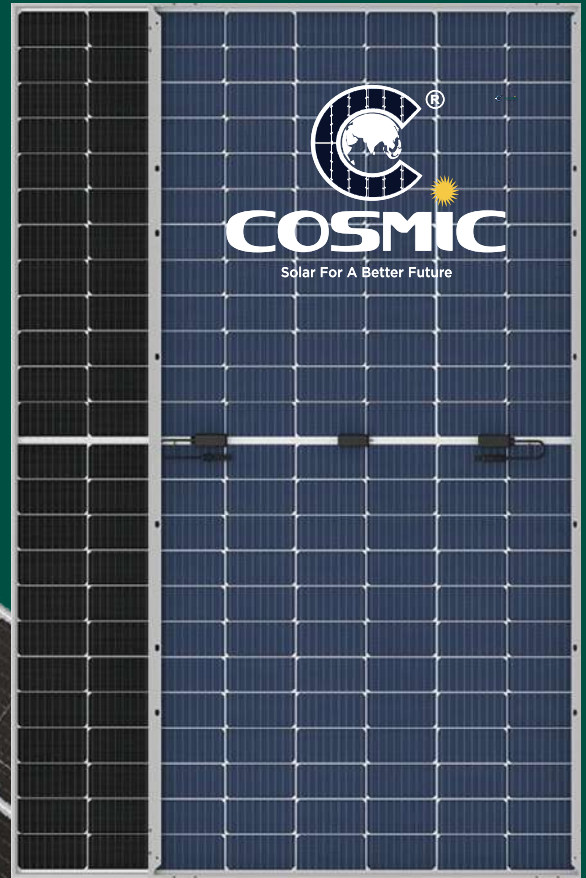
Multi Bus Bar  
Higher Efficiency  
Solar PV Modules



BIS Certified &  
ALMM Enlisted

# Choose Quality With Cosmic Solar Multi BB Modules

- More power per surface area
- Reduction of BOS costs
- Maximum longevity
- No PID, no LID
- Long warranties, high protection
- Withstands extreme environmental conditions



## COS-TWIN SERIES HALF - CELL MODULES

500 Wp - 550 Wp RANGE  
MULTI BB MODULE  
UP TO 21.3% EFFICIENCY

## Global Standard Premium Quality Multi BB DCR/NDCR PV Modules

ModuleType	COS-TWIN 535	COS-TWIN 540	COS-TWIN 545	COS-TWIN 550
Maximum Voltage $V_{mpp}$ (V)	41.47	41.70	41.90	41.93
Maximum Current $I_{mpp}$ (A)	12.92	12.95	13.01	13.14
Open Circuit Voltage $V_{OC}$ (V)	49.35	49.50	49.65	49.80
Short Circuit Current $I_{SC}$ (A)	13.78	13.85	13.92	13.98
Module Efficiency $\eta$ (%)	20.7	20.9	21.1	21.3

\*Measuring uncertainty + 3%



Glass with anti-reflective coating  
To maximize sunlight potential



Pre and Post EL Checking  
to ensure defect free modules



Positive Power tolerance up to  
2% Extra.



Superior Module Efficiency



Ip68 Junction Box for  
Long Term Weather Endurance



Ensure safety parameters  
through safety test



High Efficiency PV Modules



Linear Performance Warranty  
27 years\*



Best in-class  
Reliability & Durability



## High Efficiency Durable Dual Glass N-type TOPCon 16BB Cosmic PV Modules

- N-type TOPCon solar modules that maximize energy production having advanced technology is increasing electricity generation rates even under low light conditions.
- Half-Cell modules reduce power loss and exhibit superior performance under shading conditions with the 3-split IP68 junction box.
- High Performance using large-size Solar cells, the panel increases electricity generation per module while reducing system installation costs.
- Bi-facial enabling energy gain on both the front and back sides of solar panels, high efficiency is achieved.

### Global Standard Premium Quality Bi-facial N-type TOPCon PV Modules

Module Type	COS-TOP 570	COS-TOP 575	COS-TOP 580	COS-TOP 585	COS-TOP 590	COS-TOP 595	COS-TOP 600
Maximum Voltage $V_{mpp}$ (V)	43.05	43.25	43.45	43.65	43.85	44.05	44.21
Maximum Current $I_{mpp}$ (A)	13.25	13.30	13.35	13.40	13.46	13.51	13.57
Open Circuit Voltage $V_{oc}$ (V)	52.52	52.79	53.05	53.30	53.55	53.62	53.80
Short Circuit Current $I_{sc}$ (A)	13.85	13.87	13.91	13.93	13.96	14.03	14.09
Module Efficiency $\eta$ (%)	22.08	22.28	22.47	22.67	22.86	23.03	23.22

\*Measuring uncertainty + 3%

### Cosmic PV Power Solutions



**Residential Rooftop Solutions**



**Ground-Mounted Solutions**



**Commercial/Industrial Rooftop Solutions**



**Floating Solar Project Solutions**





# Advantages



AI (Artificial Intelligence) driven fully robotic 3GW Topcon Solar Modules Manufacturing Plant.



Experienced R&D team



All components verified by strict tests and are Produced by international op brands



More than 45 years mature experience of manufacturing processes.



Using advanced supply chain management model for on time delivery



Strict quality management system



500Wp to 650Wp



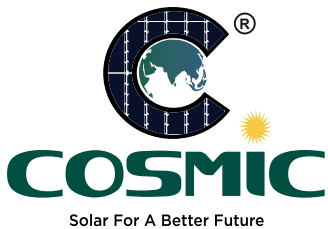
12 years Product & Workmanship Warranty



30 years Liner Performance Warranty



50+ City presence across india



\*\*Refer to Cosmic PV Power warranty document for terms and conditions. The specifications are for reference purpose only, due to constant product modifications. Cosmic PV Power reserves the right to amend the above specifications without prior notice.

## COSMIC PV POWER PRIVATE LIMITED

1800 891 9590  
www.cosmicpvpower.com  
info@cosmicpvpower.com

**Corporate Address**  
E-11, Ghael Compound,  
Nr. Laxminarayan temple BRTS,  
Udhna, Surat, Gujarat - 394210

**Factory Unit**  
Survey No. 1605/1, Block No.  
2098/1/B, Village: Tadkeshwar,  
Taluka: Mandvi, Dist: Surat,  
Gujarat - 394170